

Device Driver Installation Manual

Version:1.2.1

**(For Windows XP-32
Windows 7-32 & 64 BIT)**

Contents

Supported Platform 3

Device Driver Installation Manual 4

Un-install the Device Driver 14

Troubleshooting 18

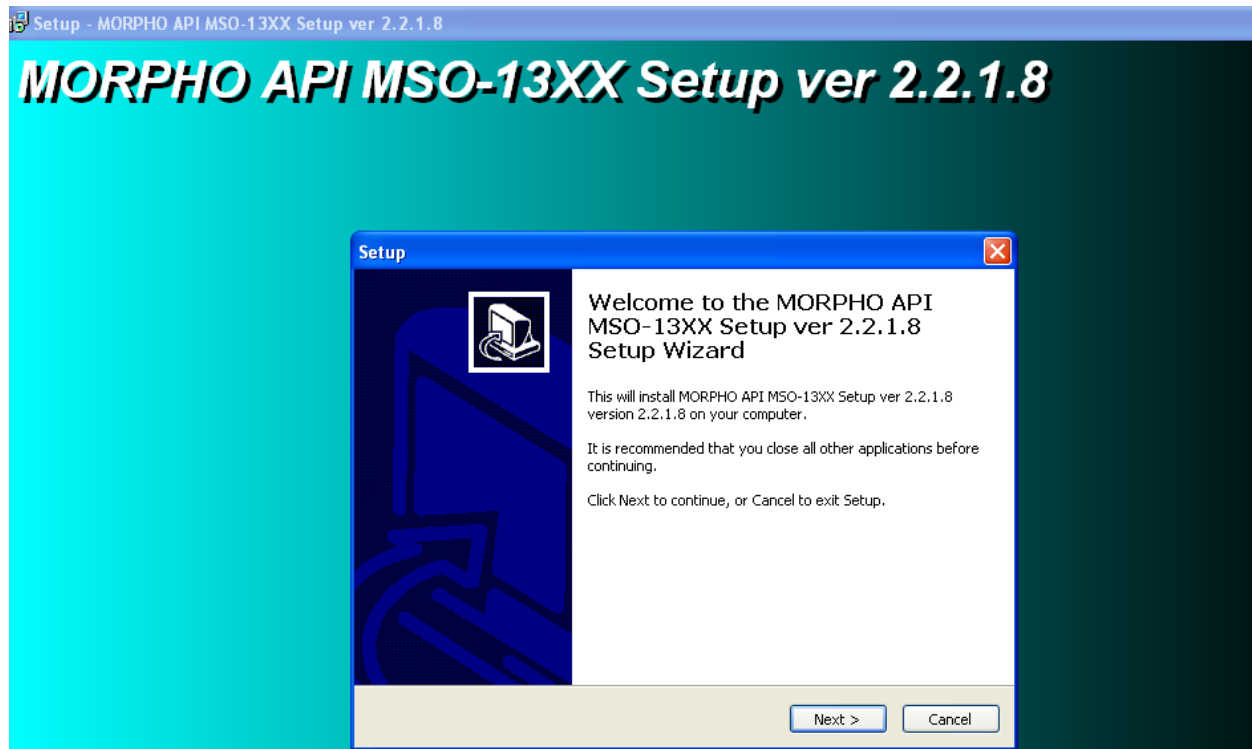
Supported Platform

- Windows XP – 32-Bit OS
- Windows 7 – 32-Bit OS & 64-Bit OS

Device Driver Installation Manual

Version 1.2.1

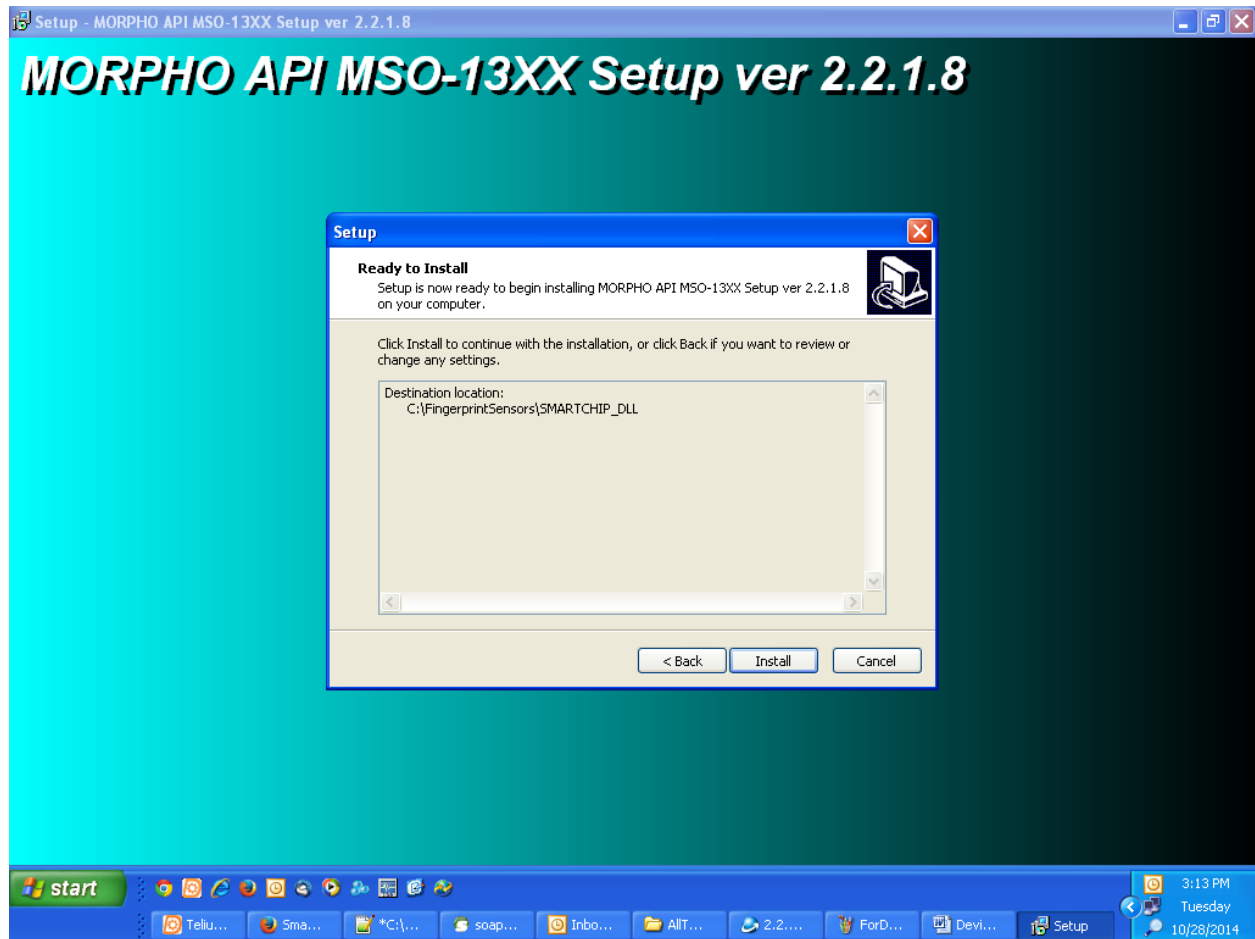
Double click on the **setup.exe**. It will start installation of all supporting drivers one by one.



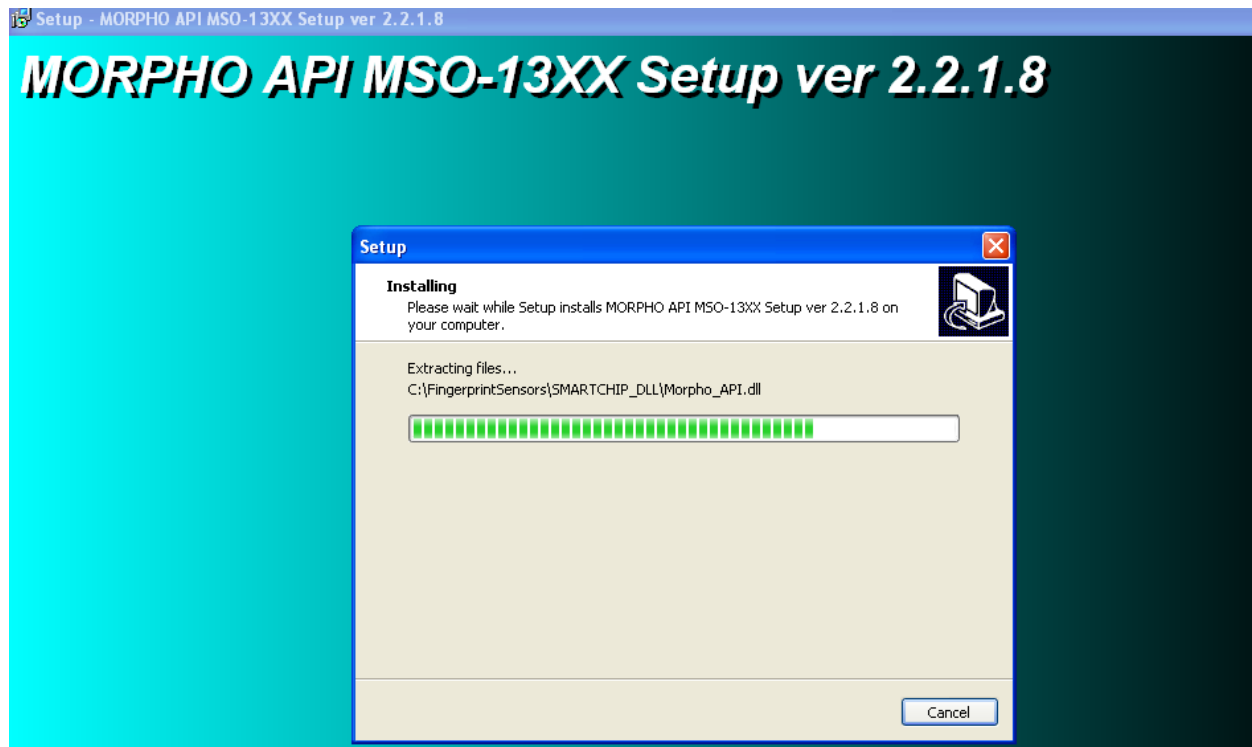
Click on the **Next** button to continue...



Click on the **Next** button, this will continue the installation at the specified location or default location
“C:\FingerprintSensors\SMARTCHIP_DLL”

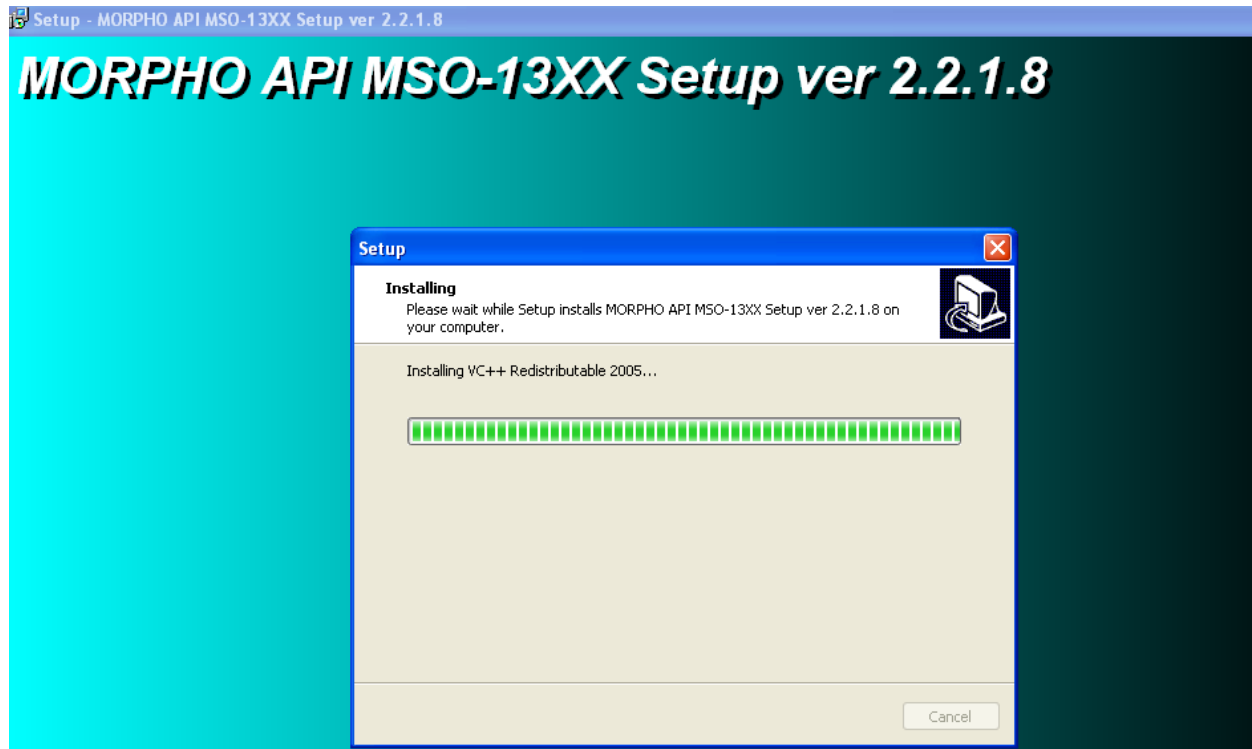


Click on the **Install** button to start the installation process.

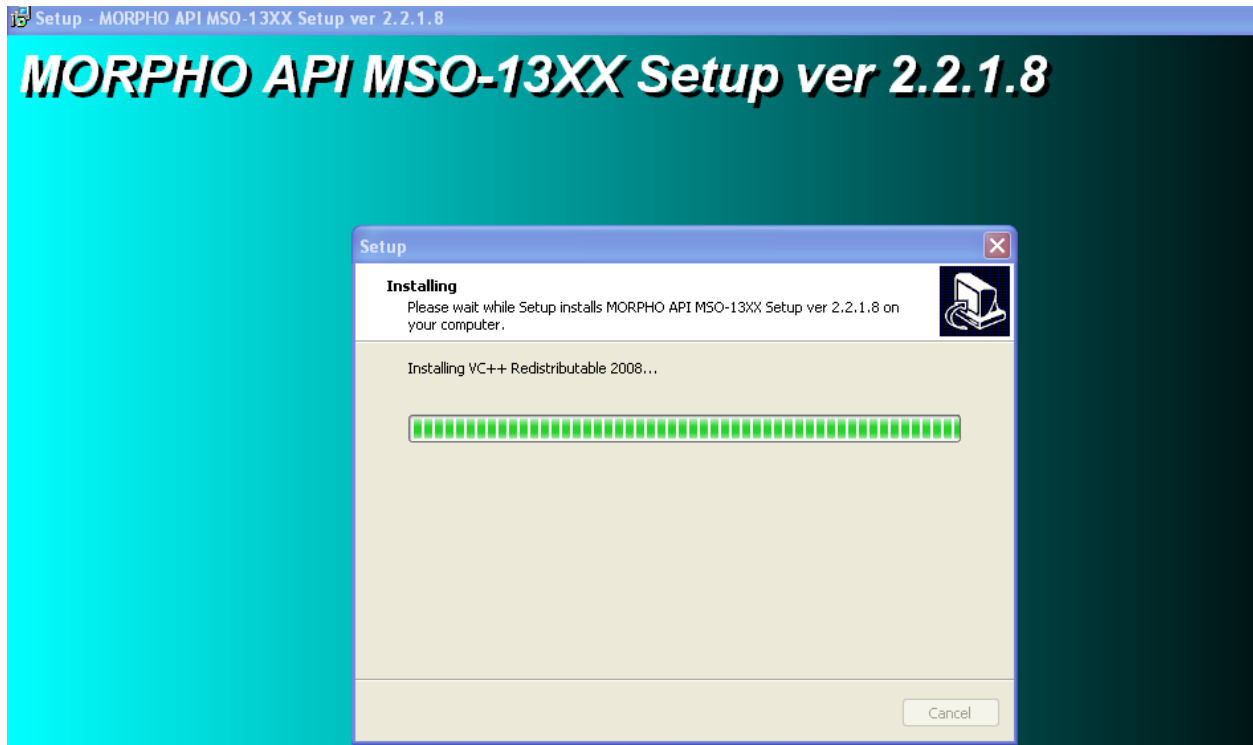


The setup will auto-detect whether the Operating system is 32 or 64 bit and will install the device driver accordingly.

Visual C++ 2005 component installation in progress...

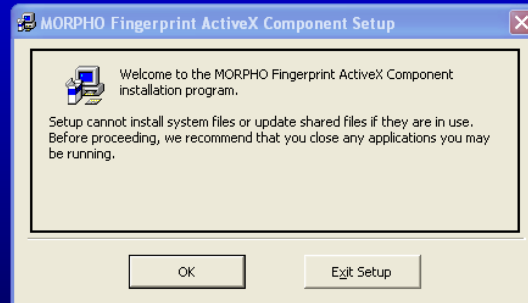


Installing Microsoft Visual C++ 2008 redistributable Component.



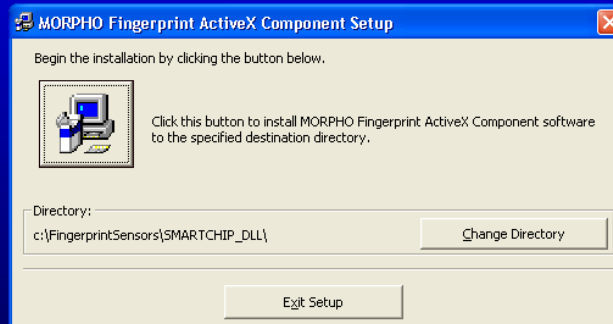
After installation of Microsoft Visual C++ 2008 redistributable Component, following component get started

MORPHO Fingerprint ActiveX Component Setup



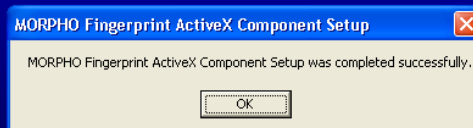
Click on '**OK**' button and following window appears on your screen:

MORPHO Fingerprint ActiveX Component Setup

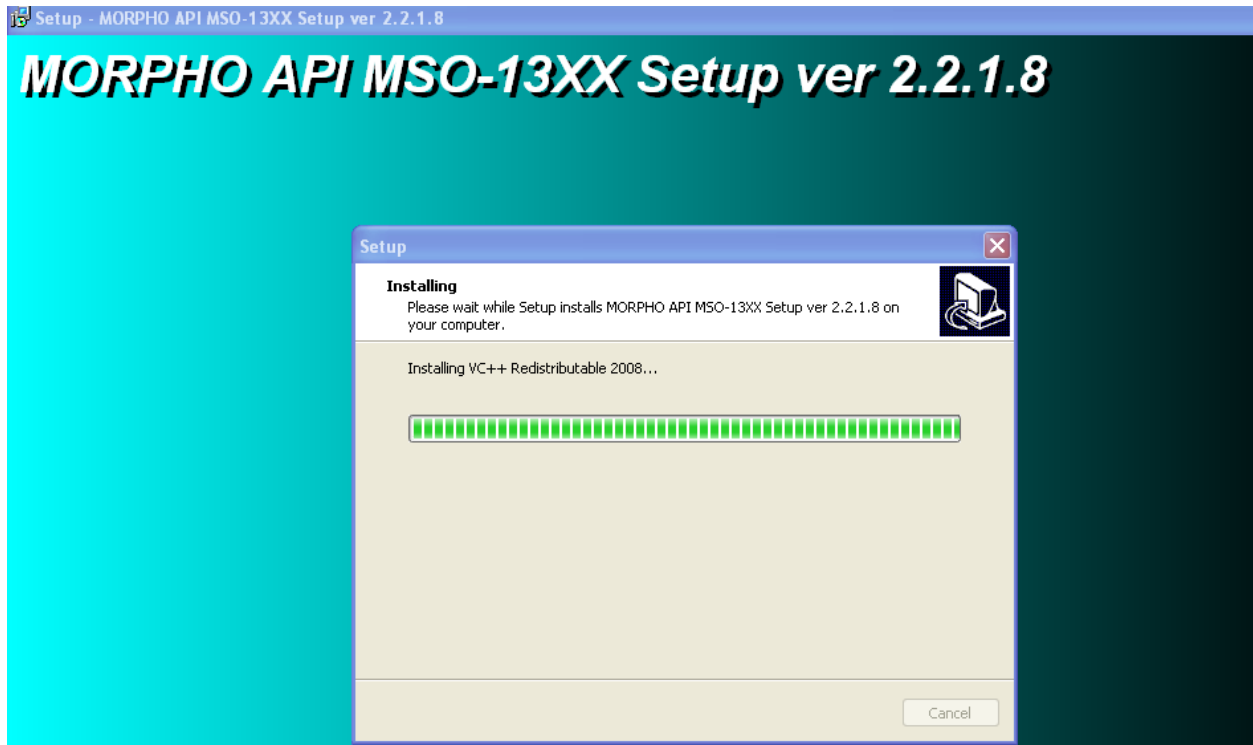


Click the button as indicated above, it will start the installation process. Following screen will appear:

MORPHO Fingerprint ActiveX Component Setup



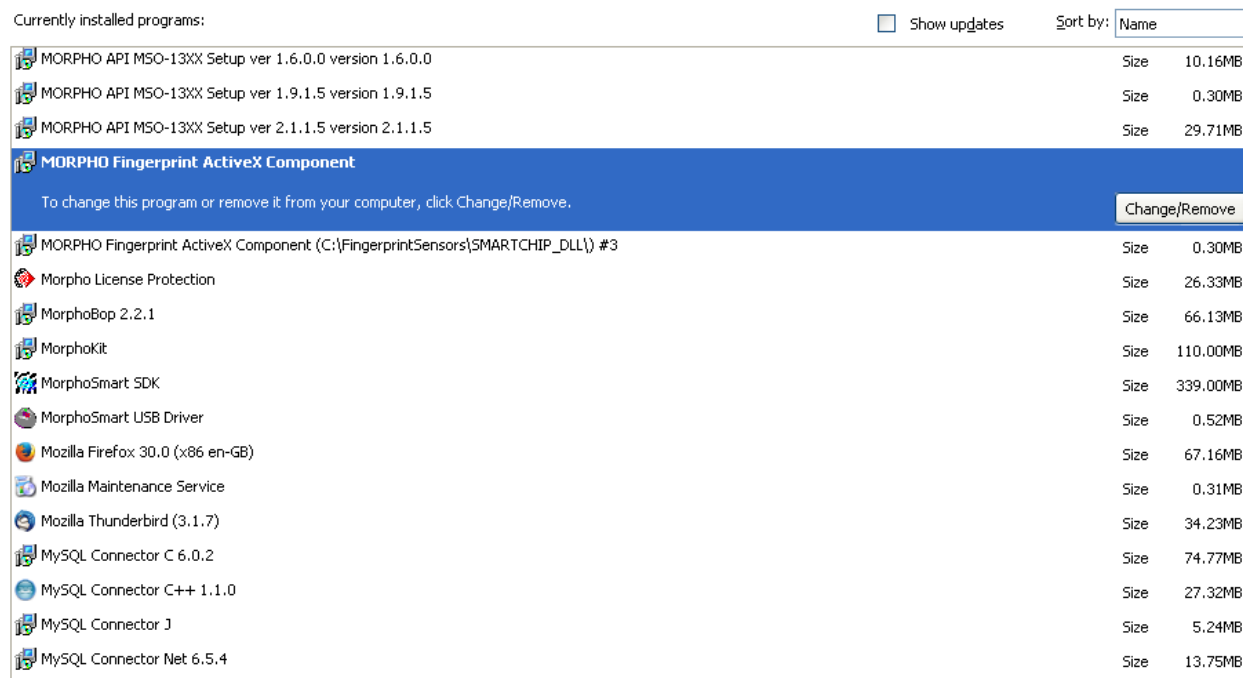
Click on '**OK**' button to complete the installation of **Morpho FP ActiveX Component**.



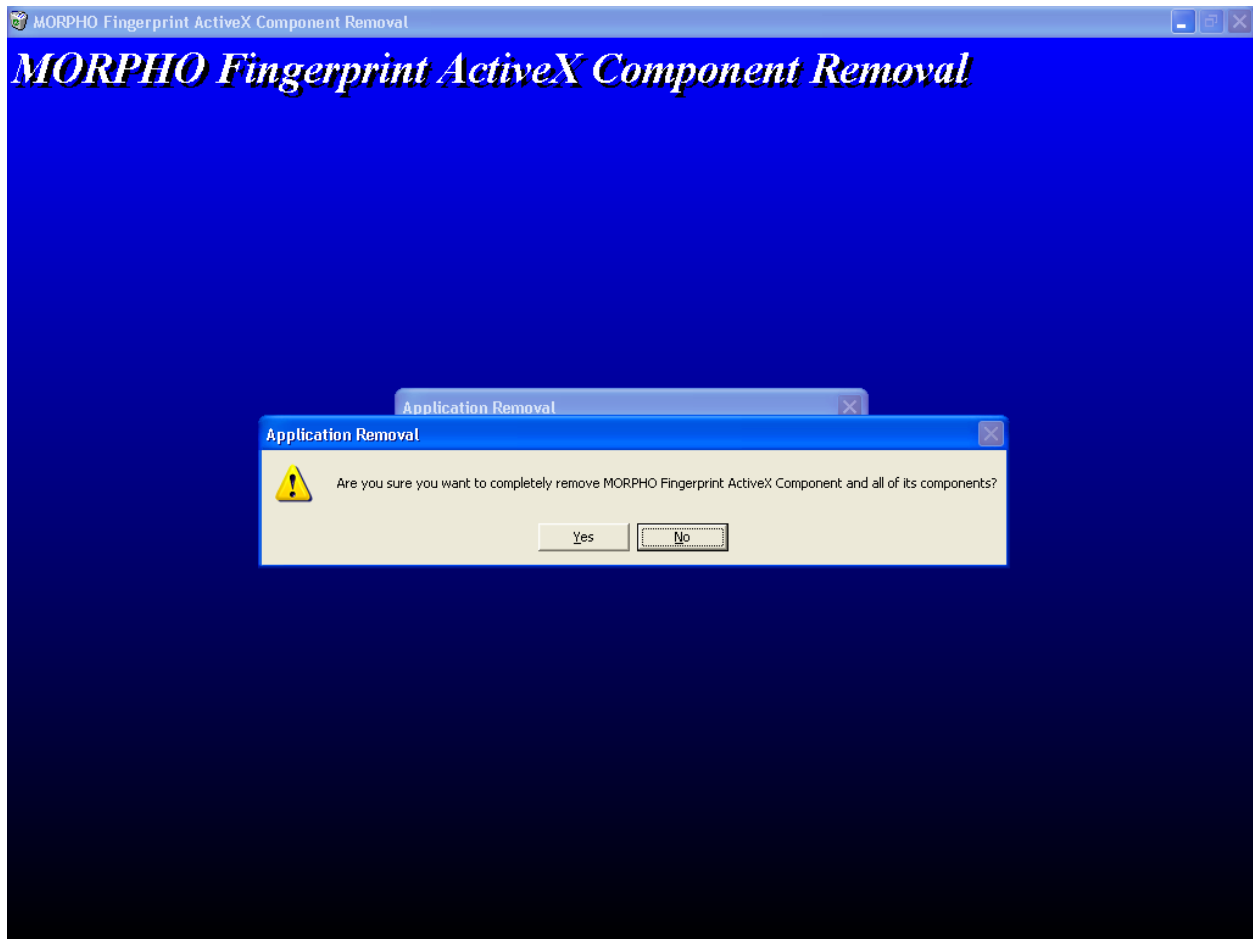
Click on **'Finish'** button to complete installation process.

Un-install the Device Driver

To uninstall the ActiveX component, go to control panel → Click on Add/Remove program. Following window appears:



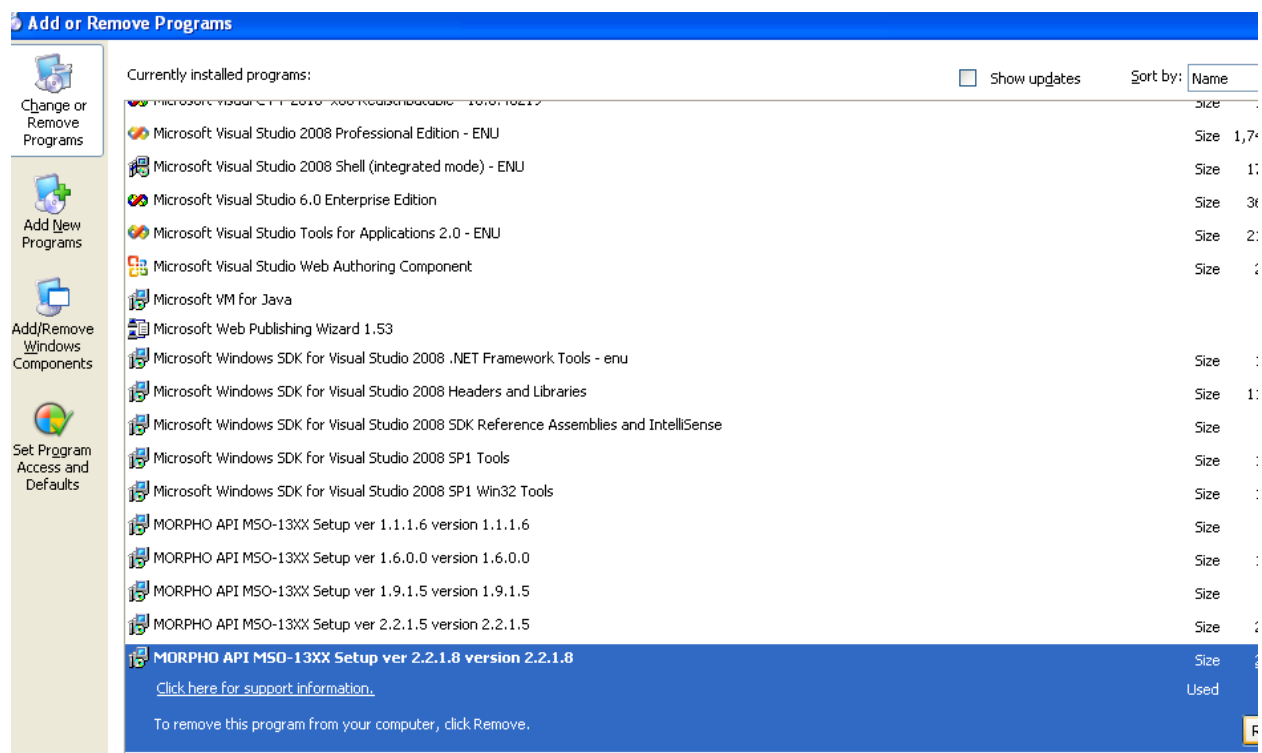
Click on '**Change/Remove**' button.



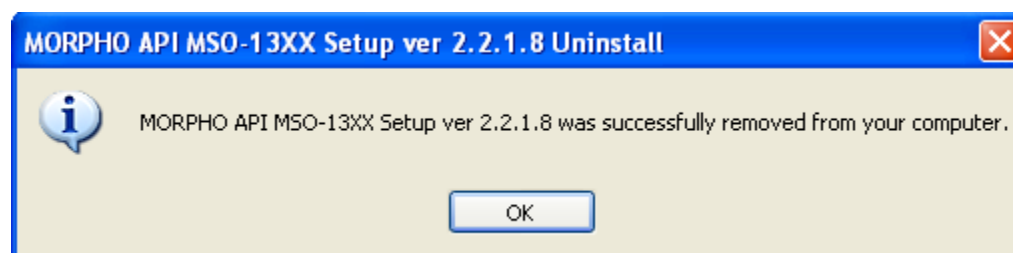
Click on 'Yes' button to uninstall the component.



Click on '**OK**' button. Again go to control panel.



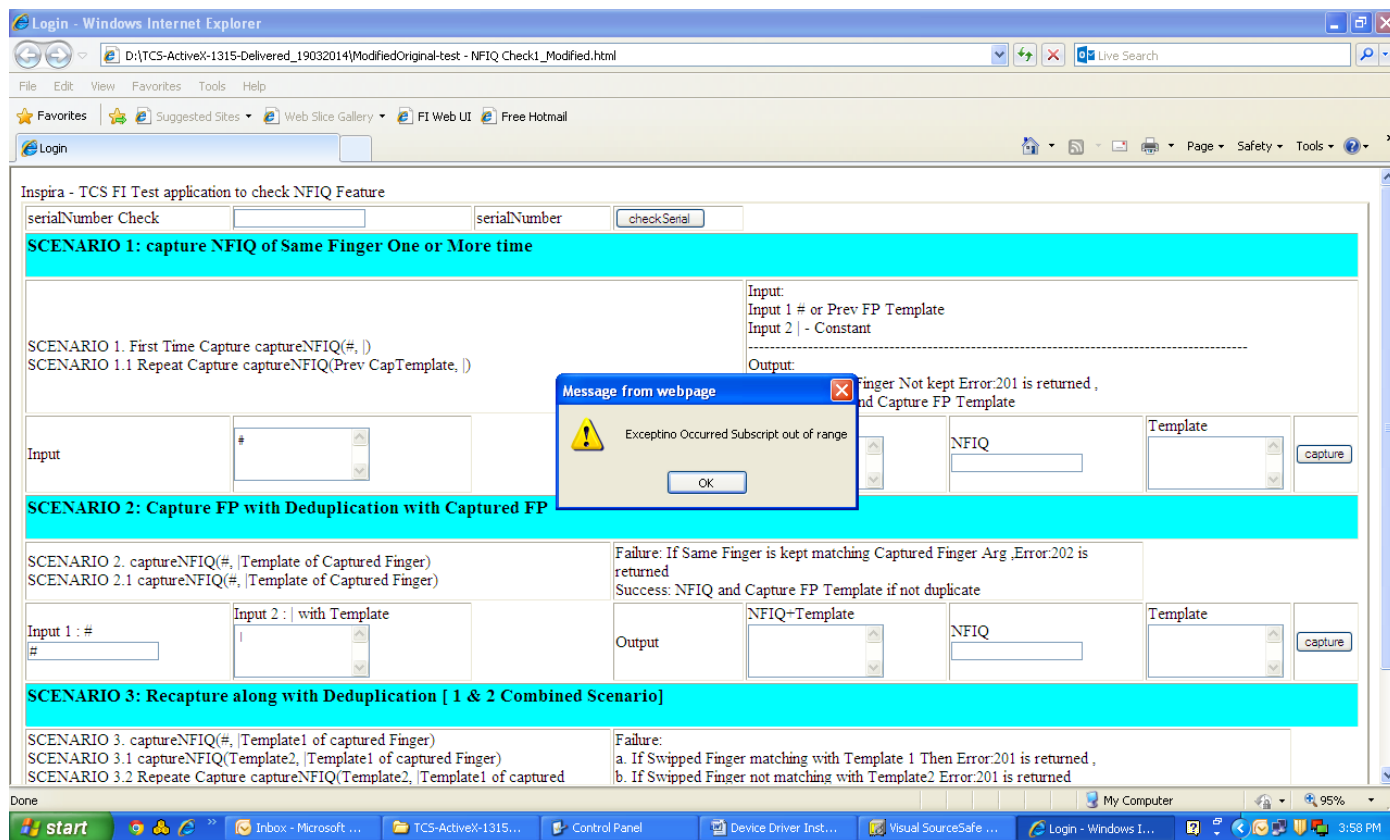
Click on 'Remove' button as shown in above figure.



Click on 'OK' button to complete un-installation process.

Troubleshooting

- **Error Subscript out of range:** If following pop-up appears on the screen while clicking on capture button,



-Either device is not enabled /connected or licenses are not installed on the device and it will not work, please contact the concerned person.